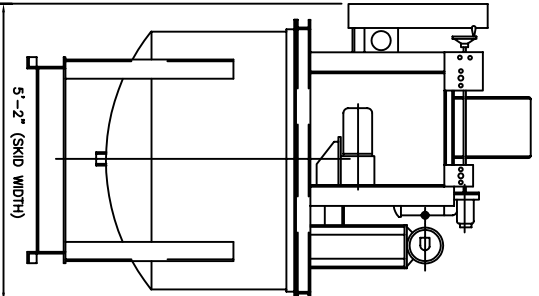
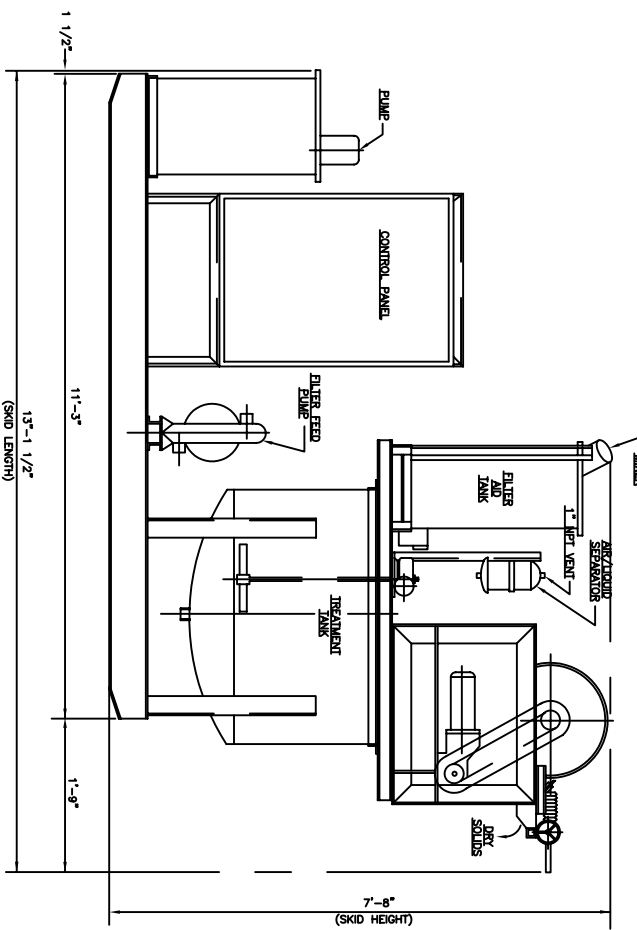
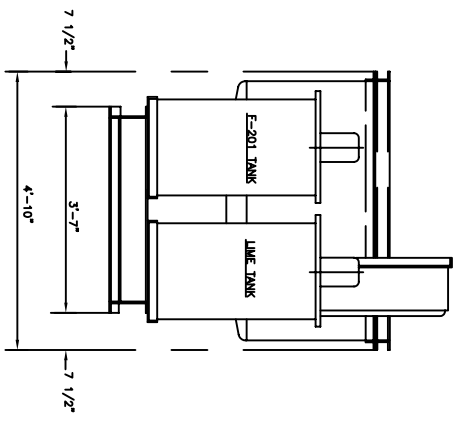


NOTES:
 ALL PROCESS & CONTROL ARE PREPARED
 ALL PROCESS & SERVICE LINES ARE PREPARED
 SHIPPING WEIGHT: 5,500 LBS.
 OPERATING WEIGHT: 9,000 LBS.



A	DATE	DESCRIPTION	BY	APP'D
	5/02/97	FOR RELEASE		
ATAAR ENGINEERING CORPORATION				
MOKENA, ILLINOIS 60448				
SCALE	N.T.S.	APPROVED BY		DRAWN BY RLL
DATE	5/02/97			CHECK
FLEX-O-STAR 200 LAYOUT W/OUT CARBON COLUMN (PLAN & ELEVATION)				
	A	FLEX-O-STAR 200		