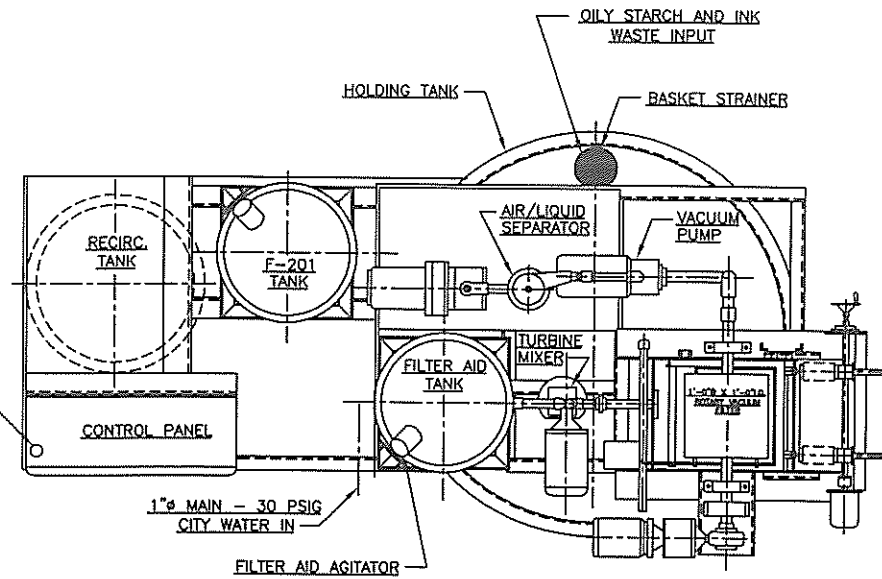


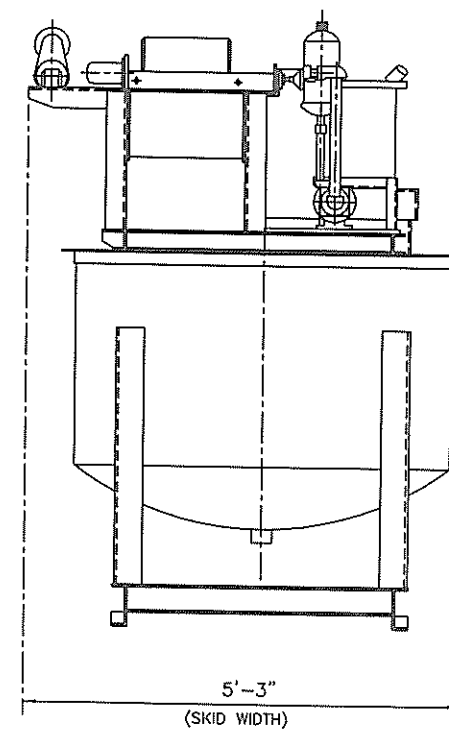
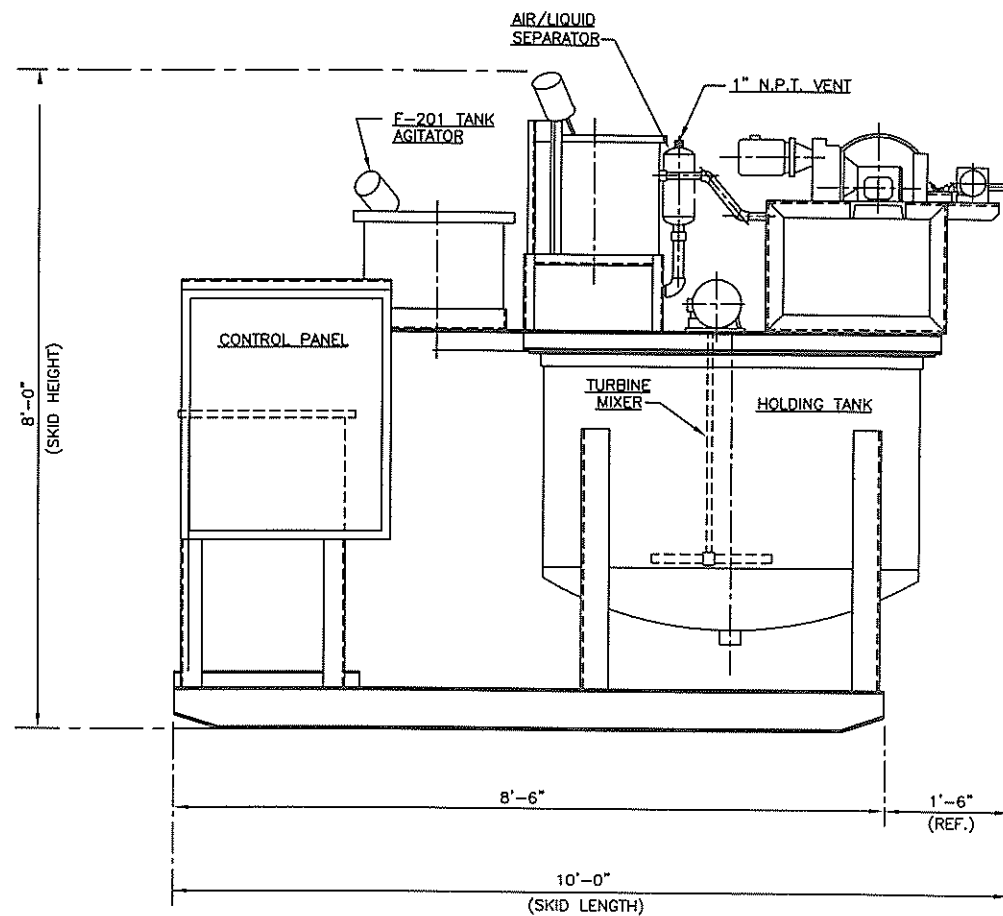
ELECTRICAL POWER SUPPLY
 120 VAC., 1 ϕ , 60 HZ, 30/25 AMP.
 480 VAC., 3 ϕ , 60 HZ, 30/10 AMP.
 OR
 230 VAC., 3 ϕ , 60 HZ, 30/20 AMP.



NOTES:

ALL MOTORS AND CONTROLS ARE PREWIRED
 ALL PROCESS AND SERVICE LINES ARE PREPIPED

SHIPPING WEIGHT = 3800 LBS.
 OPERATING WEIGHT = 7,400 LBS.



REV.	DATE	DESCRIPTION	BY	APP'D.
A	02-18-05	FOR INFORMATION	ACS	
ALAR ENGINEERING CORPORATION MOKENA, ILLINOIS 60448				
SCALE	1"=1'-0"	APPROVED BY:	DRAWN BY RLL	
DATE	02/15/00		CHK'D.	
ECONO-STAR 200 GENERAL ARRANGEMENT WITH F-201 TANK AND NO CARBON COLUMN				
(PLAN AND ELEVATION)			REVISION A	DRAWING NUMBER 4510-054