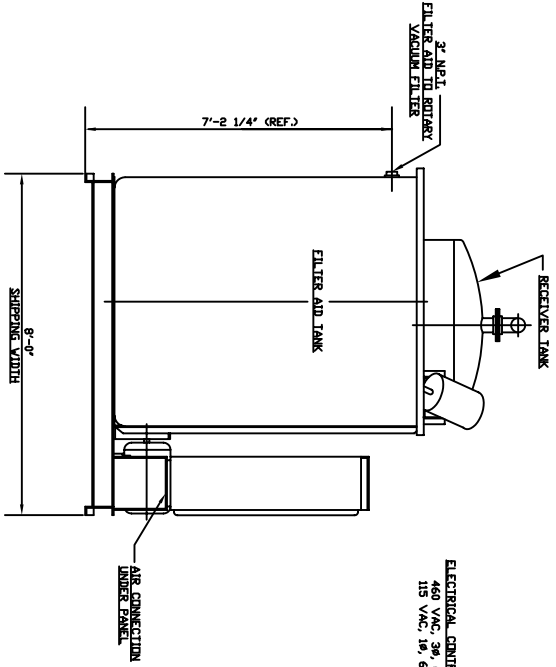
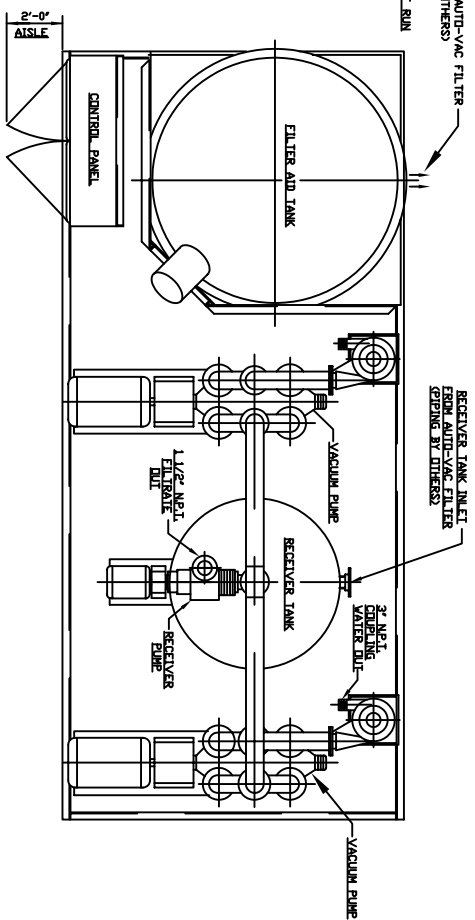


NOTES:-
 ALL MOTORS AND CONTROLS ON THIS SKID ARE PROVIDED
 ALL PIPING AND ELECTRICAL WORKS BETWEEN AUTO-VAC FILTER
 AND AUXILIARY SKID ARE BY OTHERS.

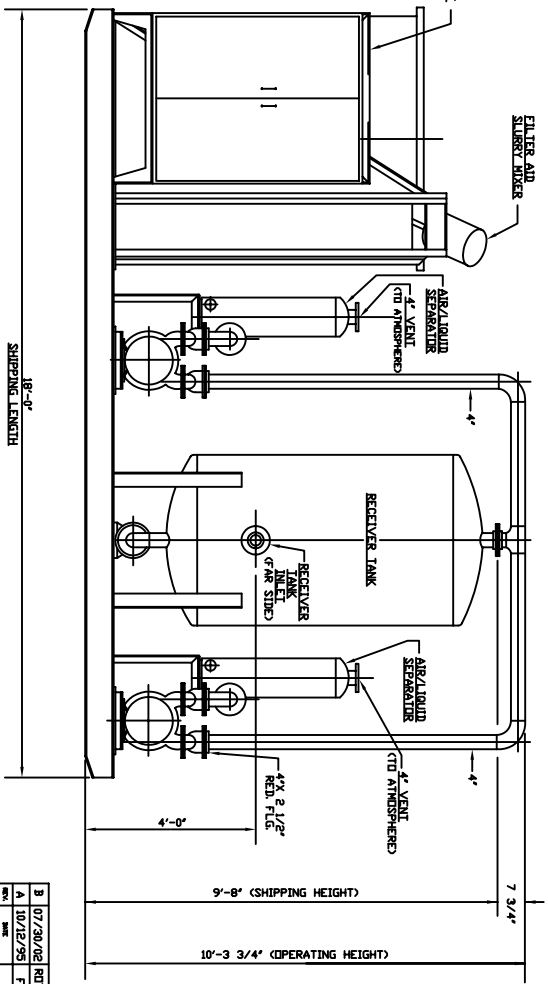
SHIPPING WEIGHT = 6,000 LBS.
 OPERATING WEIGHT = 20,000 LBS.



NOTE:-
 MUST BE STRAIGHT RUN
 WITHOUT BENDS



ELECTRICAL CONTROL CABINET
 460 VAC, 3Ø, 60 HZ
 115 VAC, 1Ø, 60 HZ



REV	DATE	DESCRIPTION	BY	APP'D
3	07/30/08	ROTATED REC. TANK INLET	RL	RL
4	10/12/95	FOR RELEASE	RL	RL
5	3/7/91		RL	RL

DESIGNED BY: RLL
 DRAWN BY: RLL
 CHECKED BY: RLL
 APPROVED BY: RLL
 DATE: 10/12/95
 PROJECT: AUXILIARY SKID FOR AUTO-VAC MODEL 690 ROTARY VACUUM FILTER (PLAN AND ELEVATION)
 SKID NO: AUTO-VAC 690-2